

Overview:

The West Virginia Stream Watch app is a smartphone-enabled form designed to document and share water quality and habitat issues on West Virginia streams and rivers. This basic information is stored online and is viewable by WV Rivers, TU, partner organizations and agency staff. The information collected is intended to be a broad description of the disturbance with photographic evidence that is geo-located (GPS location). This information will inform follow up inspections and/or identification of potential restoration projects.

Downloading WV Stream Watch:

WV Stream Watch is not a mobile app itself, but rather is a 'Survey' within the mobile app called **Survey123 for ArcGIS**

Step 1: Download the Survey123 for ArcGIS mobile app to your phone:

- a. Use the App Store with an iPhone, or Google Play with an Android phone
- b. Or, scan the QR code below to be prompted to download Survey123 for ArcGIS from your respective app store



Survey123
app icon

NOTE: If you open the Survey123 app at this point, it will ask you to Sign In; instead, you must first download the WV Stream Watch survey form, as described below.

Step 2: Download the WV Stream Watch survey form within the Survey123 for ArcGIS app:

- a. Open this link on your phone using Safari or Google Chrome: arcg.is/1jDC9G
OR, Scan the QR code using your smartphone camera
 - This will prompt you to open the link in a browser, such as Safari
- b. Click 'Open in the Survey123 field app'. Ignore the 'Sign in to ArcGIS online' message if it appears. Click continue without signing in. Allow Survey123 to access your location and camera



Scan QR code to
download WV
Stream Watch

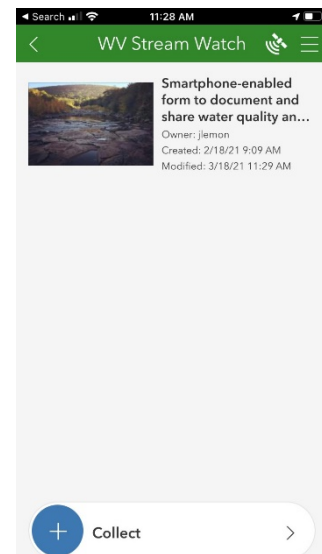
Opening WV Stream Watch within the Survey123 app:

Step 1: Open the Survey123 app (if not already open)



Step 2: Select the WV Stream Watch survey from My Surveys

Step 3: Tap the Collect icon at the bottom of your screen to begin collecting data



Tap **Collect** at bottom
to start a survey.

The West Virginia Stream Watch app is a smartphone-enabled form designed to document and share water quality and habitat issues on West Virginia streams and rivers.

Begin a WV Stream Watch survey:

A new survey is used to collect data on each individual disturbance

Step 1: Enter the stream name and your contact information.

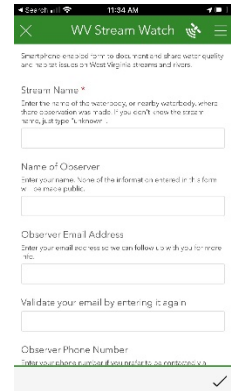
- Enter the name of the waterbody, or nearby waterbody, where the observation was made.
- Enter your contact info. This is optional but it may be necessary to follow up for more info.
- *Note:** Save your contact information as 'Favorites' using upper right menu so that you can simply paste in this information for every new survey

Step 2: Complete disturbance information for the survey

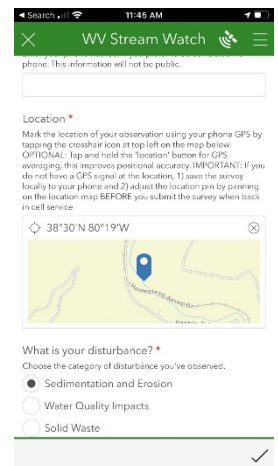
- Mark the location by tapping on the marker location at top left
 - You must tap the marker location to update your GPS location
 - You can tap the map to open it and move your location pin or tap the marker location button within the map to update location. Tap the check mark to capture the updated location
- Select the general disturbance type
 - You have to select a general disturbance to see options for specific disturbances
 - *Tip:** tap the thumbnail to enlarge photos
 - See the *WV Stream Watch: Disturbances* document for more information on disturbance types
- Select the specific disturbance type, which is available after you select a general disturbance type
- Take 1-3 high quality photos of the disturbance. Use a person for scale if possible
 - See the *WV Stream Watch: Photos* document for more information



Document a sediment plume using WV Stream Watch



Start a Survey using WV Stream Watch



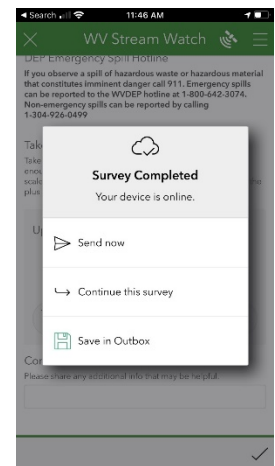
Mark each disturbance location in WV Stream Watch

Step 3: Enter survey notes

- Enter notes for each survey or disturbance to give context to collected data

Step 4: Complete survey by tapping the check mark at bottom right

- If you have cellular service, tap Send **Now** when prompted.
- If you do not have service, it will be stored in our Outbox and can be sent at a later time when you have service



Surveys will be stored in your Outbox until you have cell service

The West Virginia Stream Watch app is a smartphone-enabled form designed to document and share water quality and habitat issues on West Virginia streams and rivers.